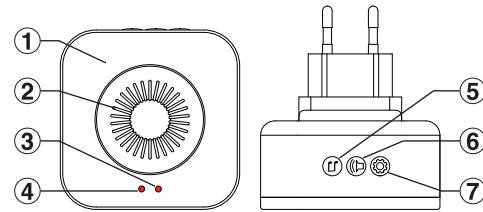
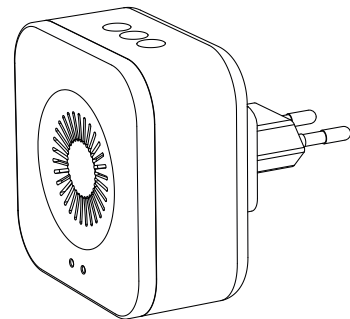




# SMART-RING-BELL

Extra bell for SMART-RING20

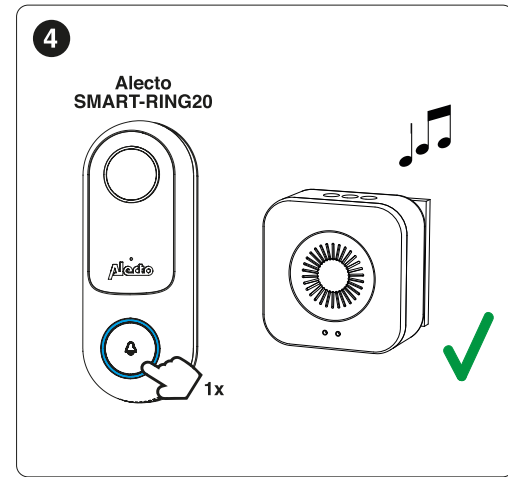
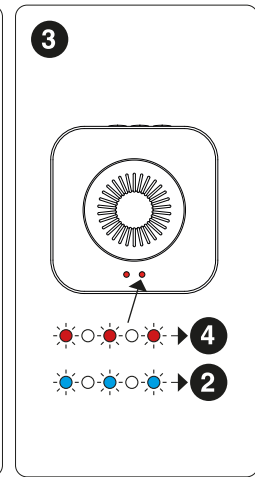
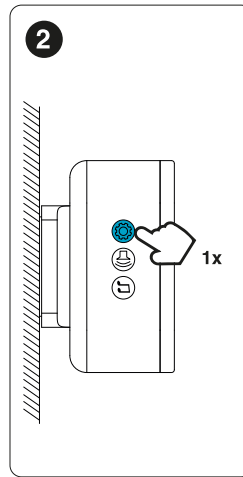
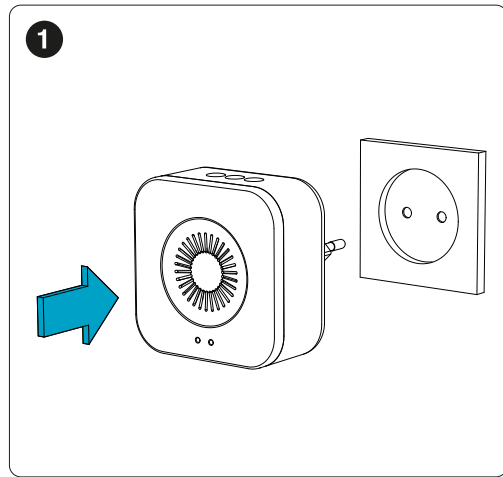


- NL**
1. Behuizing
  2. Luidspreker
  3. Status indicatie lampje
  4. Power indicatie lampje
  5. Melodie keuze
  6. Volume-instelling
  7. Registratieknop

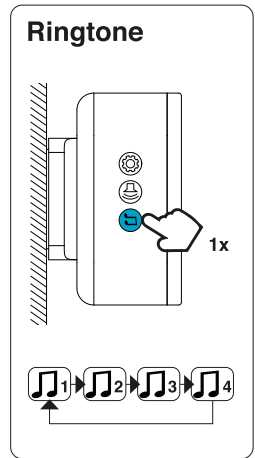
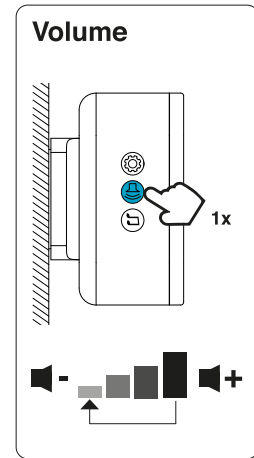
- DE**
1. Gehäuse
  2. Lautsprecher
  3. Statusindikationslicht
  4. Stromindikationslicht
  5. Melodieauswahl
  6. Lautstärke-Einstellung
  7. Registrationsknopf

- FR**
1. Logement
  2. Orateur
  3. Voyant d'état
  4. Voyant lumineux
  5. Choix de la musique
  6. Réglage de volume
  7. Bouton d'enregistrement

- EN**
1. Housing
  2. Speaker
  3. Status indicator light
  4. Power indicator light
  5. Melody selection
  6. Volume setting
  7. Registration button



Max. 35 sec.



## SPECIFICATIONS

Transmission method:	RF
Frequency:	433 MHz
Environment:	Indoor use only
Input voltage:	220-240VAC 50Hz
Dimensions:	75x75x80mm
Range:	Up to 50 m

DECLARATION OF CONFORMITY  
 Hereby, Hesdo declares that the product Alecto SMART-RING-BELL is in compliance with directive 2014/53/EU.  
 The full text of the EU declaration of conformity is available at the following internet address: <http://DOC.hesdo.com/SMART-RING-BELL-DOC.pdf>

Hesdo BV  
 Azielaan 12  
 5232 BA, 's-Hertogenbosch  
 The Netherlands



