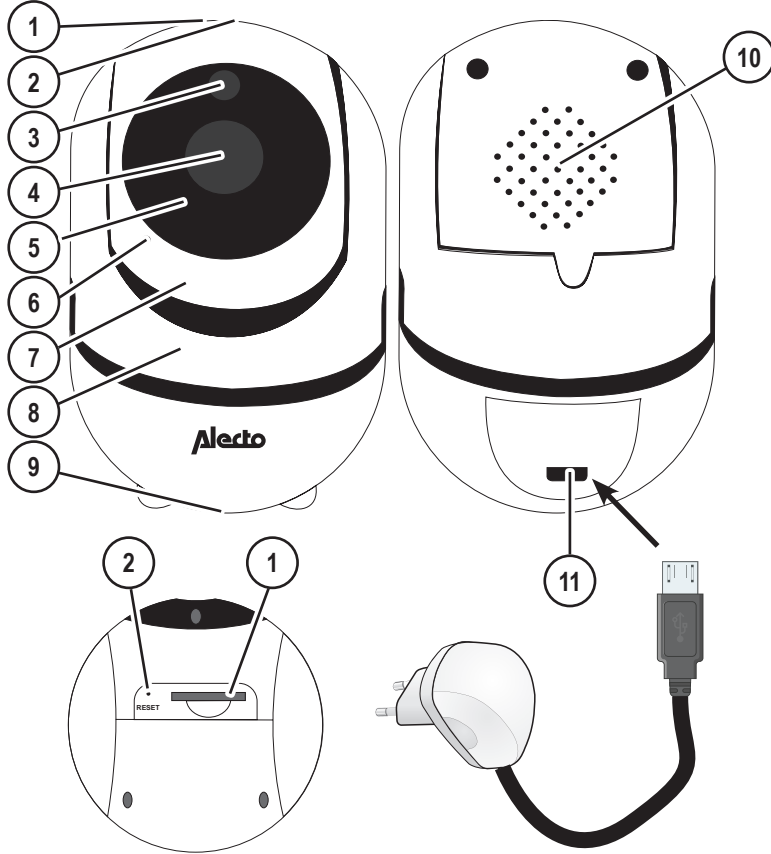


Gebbruiksaanwijzing - User manual - Gebruiksaanleitung - Mode d'emploi

DVC-155+/165+

Alecto®



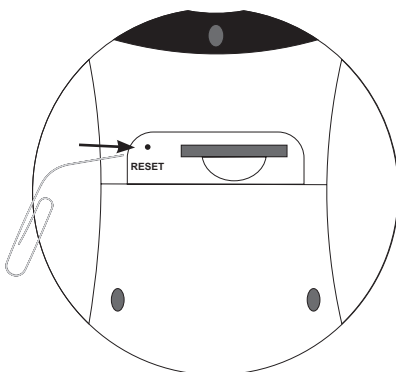
- | | |
|------------------------|-----------------------|
| 1. SD kaart-slot | 1. SD card slot |
| 2. Reset toets | 2. Reset button |
| 3. IR sensor | 3. IR sensor |
| 4. lens | 4. lens |
| 5. IR Led's | 5. IR Leds |
| 6. microfoon | 6. microphone |
| 7. tilt draai gedeelte | 7. tilt movement part |
| 8. pan draai gedeelte | 8. pan movement part |
| 9. bevestigings moer | 9. mounting nut |
| 10. luidspreker | 10. loudspeaker |
| 11. voedingsingang | 11. power entree |
-
- | | |
|------------------------|----------------------------------|
| 1. SD-Kartensteckplatz | 1. Fente pour carte SD |
| 2. Reset-Taste | 2. Bouton de réinitialisation |
| 3. IR-Sensor | 3. capteur infrarouge |
| 4. Objektiv | 4. objectif |
| 5. IR-Leds | 5. Leds IR |
| 6. Mikrofon | 6. microphone |
| 7. Kippbewegungsteil | 7. pièce à mouvement basculant |
| 8. Pan-Bewegungsteil | 8. pièce de mouvement du plateau |
| 9. Befestigungsmutter | 9. écrou de montage |
| 10. Lautsprecher | 10. haut-parleur |
| 11. Stromeingang | 11. entrée de puissance |

SD-Card



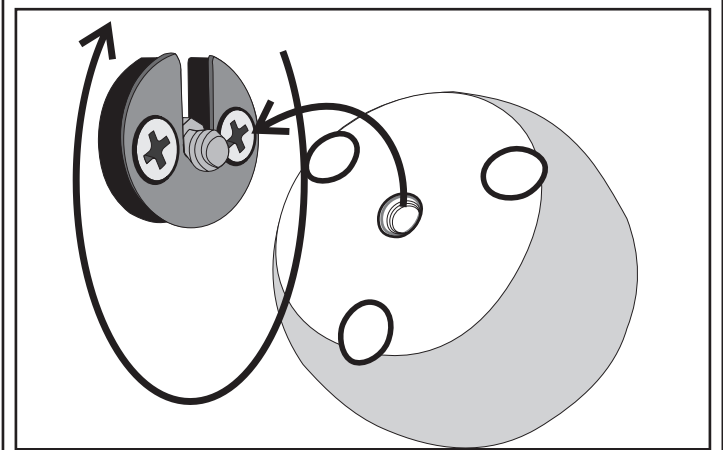
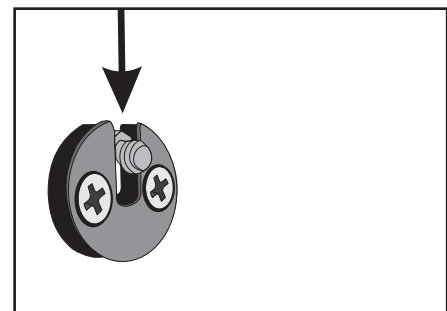
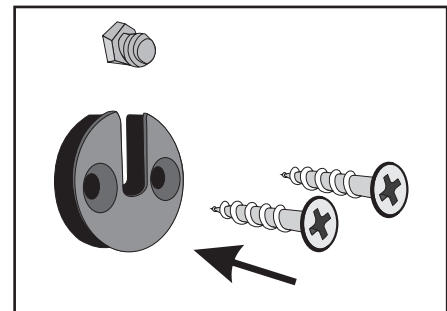
max. 32Gb

RESET



push for 10 sec.

Wall mount



DECLARATION OF CONFORMITY:

This equipment complies with the essential requirements and provisions as described in the European Directive 2014/53/EU.

The declaration of conformity is available at:

<http://DOC.hesdo.com/DVC-155+-DOC.pdf>

Frequentie : 2407 – 2475 MHz

Maximum Vermogen : < 20 dBm

Alecto[®]

Service ↓ Help

 | WWW.ALECTO.NL
SERVICE@ALECTO.NL

 | **Hesdo, Australiëlaan 1**
5232 BB, 's-Hertogenbosch
The Netherlands

v3.0

