

**1**

1x  + 1x 

---

  → 1x  + 1x  + 2x  NiMH AAA 400mAh rechargeable\*

**2**

 ↔ min. 1 m  ↔ max. 50 m  ↔ max. 300 m

max. 50 m

max. 300 m

**3**

 →  →  \*\*

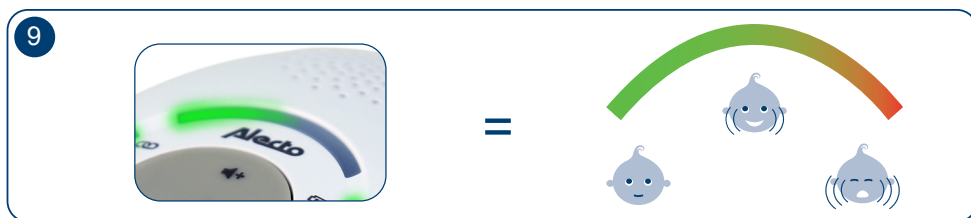
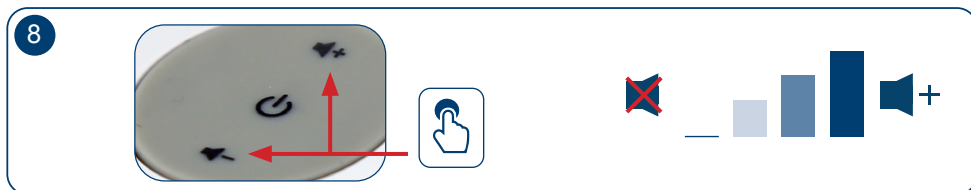
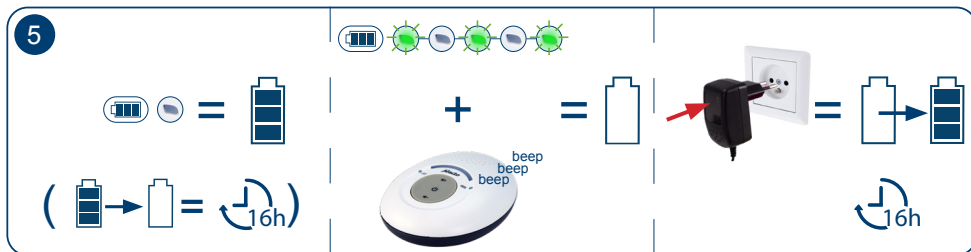
---

  →  →  →  \*\*

**4**

 ON / OFF  3sec 

 ON / OFF  3sec 



#### DECLARATION OF CONFORMITY

Hereby, Commaxx declares that the radio equipment type Alecto DBX-115 is in compliance with directive 2014/53/EU. The full text of the EU declaration of conformity is available at the following internet address: [https://commaxx-certificates.com/doc/dbx-115\\_doc.pdf](https://commaxx-certificates.com/doc/dbx-115_doc.pdf)



\* Use only rechargeable NIMH battery listed below:  
CORUN, Ni-MHAAA400 (Designation No.: Ni-MH AAA 400mAh 1,2V)  
Caution: Risk of explosion if battery is replaced by an incorrect type!  
Dispose of used batteries according to the instructions.

\*\* For pluggable equipment, the socket-outlet shall be installed near the equipment and shall be easily accessible.  
Frequency Range : 1880-1900 Mhz  
Maximum Power : < 24 dBm

For Indoor use only

Commaxx B.V., Wiebachstraat 37, 6466NG Kerkrade, The Netherlands  
[www.alectobaby.com](http://www.alectobaby.com)

**Information Power Adapter:**  
Manufacturers name and address:  
Vtech Telecommunications LTD, 23/F., Tai Ping Industrial Centre, Block 1, 57 Ting Kok Road, Tai Po, Hong Kong.  
Output Power: 2.7 W  
Average active efficiency: 74.9 %  
Efficiency at low 10% load: -  
No load Power consumption: 0.03 W

CE v1.6